

Northcote House

Northcote House is a superb newly renovated double fronted Georgian cottage situated next to the Picnic Fayre delicatessen in the heart of Cley-next-the-Sea on the North Norfolk coast. It has recently been fully renovated throughout to a very high standard and the owners have furnished the cottage beautifully to make a comfortable and stylish retreat.

Northcote House has a large kitchen/diner complete with a rustic French oak table and a matching vitrine. French doors open out from the dining area on to the paved terrace making it a beautifully light and airy space to eat when the sun is shining. The kitchen area is fully equipped as you would expect with a five ring halogen ceramic hob and stainless steel fan oven, a dishwasher and fridge/freezer

Next to the kitchen/diner is the large sitting room which has large comfy sofas arranged around the super 'Yeoman' log burner and a large smart LED T.V with a BluRay player. At the other end of the sitting room there is a separate reading area which has large French doors that open on to the paved terrace. Both the kitchen/diner and the sitting room have engineered oak floors with an underfloor heating system.

To the other side of the kitchen/diner is an entrance lobby which has separate access to the off-street parking area - perfect when you are entering the cottage after a muddy walk or a day on the beach! Linked to the lobby is a separate downstairs WC and a utility room which has a top of the range washing machine and tumble dryer and a separate drinks fridge. There is also a garden room with a sofa, a desk and lots of board games - ideal for when members of the family need their own space!

Outside, the house has a beautiful south facing garden which is very private. The garden has a lawn and a raised terrace for BBQ's and dining alfresco. The kitchen/diner, sitting room and garden room all have French doors onto the garden and give the house a very open light feel, especially during the summer months. A barbeque and cooking tools are provided.

Upstairs, there are three bedrooms offering flexible accommodation. The master bedroom has a king size bed and a lovely en-suite shower room with a rain shower and a WC. The second bedroom has a super-king zip and link bed which can be split into two single beds if required (if you would like the room to be made up as a twin, please give us at least two weeks' notice). The third bedroom has two full-size single beds and beautiful views across water meadow towards the village of Wiveton. Antique chests of drawers and Sanderson curtains give the stylish modern bedrooms a traditional twist. There is also a large family bathroom, decorated with tongue and groove panelling, which has a large bath with overhead rain shower and a third WC.

Northcote House is superbly located in Cley, it is only a few metres away from the coastal path and is near the coast hopper bus stop - a great way to explore the area without the need to take your car. It is also within a few minutes' walk of two very good pubs, the fabulous Artemis Coffee shop, the Pinkfoot art Gallery, the famous Cley Smokehouse and various other interesting shops.

In low and mid-season the owners of Northcote House are happy to offer 20% discount when only one bedroom is used and 10% if two bedrooms are used. Please call the office on 01263741777 to take advantage of this offer. (please note this offer cannot be used in conjunction with any other discounts running at the time of booking)

THE BLAKENEY COTTAGE COMPANY

Accommodation

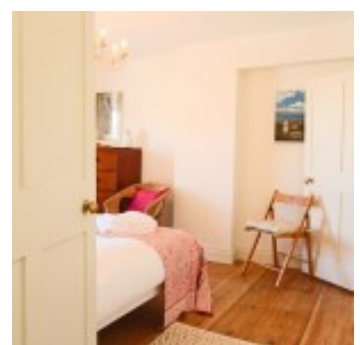
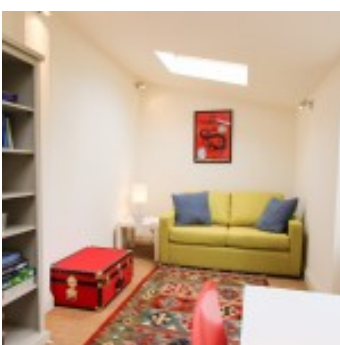
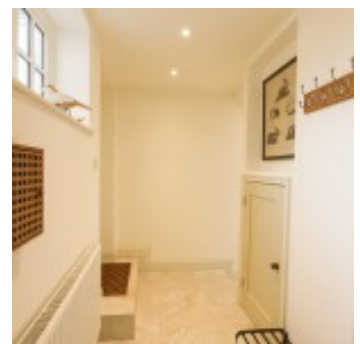
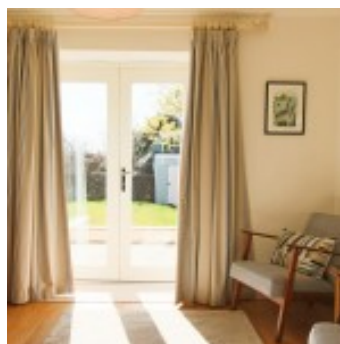
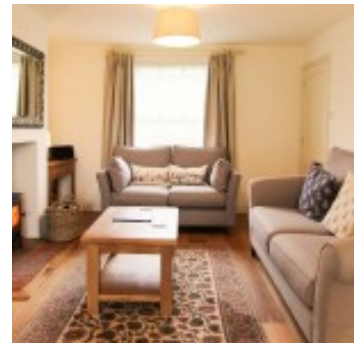
- Total Bedrooms x3
- Sleeps x6
- Twin beds x1
- Kingsize beds x1
- Zip and link beds x1
- Reception rooms x3
- Total Bathrooms x2
- Ensuites x1

Equipment

- Washing machine
- Tumble dryer
- Iron & board
- Large fridge freezer
- Microwave
- Dishwasher
- Free Wi-Fi
- BluRay player

Property

- Views
- Garden furniture
- BBQ
- Fire - Woodburner
- Heating - Electricity
- Parking x1 - Private
- Garden
- Children allowed



THE BLAKENEY COTTAGE COMPANY

