

## Water's Edge

Water's Edge is a beautifully furnished, elegant apartment styled with muted Farrow & Ball greys and whites in a fabulous coastal location in the village of Blakeney, one of the most sought after and popular on the North Norfolk coast. With a tranquil blend of painted, glass and rattan furniture, a sprinkling of antiques and delightful interior design touches Water's Edge apartment has a timeless ambience.

The modern Guildhall Flats building, is home to this first-floor apartment, which is next to the English Heritage site of Blakeney Guildhall and just yards from Blakeney Quay, affording stunning views over the Quay, the Marshes and beyond to Blakeney Point from the Juliette balcony. Both bedrooms also offer views over Mariner's Hill and the coast beyond.

The entrance holds an exterior Boot Room - perfect for coats, shoes, boots and extra bag storage. Through the main front door and entrance hall leading to the lounge, there is a beautifully decorated, west facing living area, with large sliding French-style doors opening onto the Juliette balcony with wonderful views of the Quay, Salt Marshes and the historic High Street. Painted furniture alongside glass coffee and side tables complement the light atmosphere with a lovely comfortable sofa and two armchairs to relax and make the most of the views.

Entertainment is provided with a Sony 43" SMART television, Netflix enabled, a Blu Ray DVD player and Ruark R4 integrated music system with CD player and Bluetooth streaming. In the sideboard, there is a wide selection of films, DVD's and CD's for your enjoyment along with lots of local interest, guidebooks and novels too. There are also traditional board games, playing cards and dominoes...a wonderful selection to choose from. The lounge also has a humble 'dial switch' Roberts DAB Radio for those lovers of traditional looking vintage radios! There is a round dining table with four dining chairs and full floor length dress curtains & sheer voiles for privacy.

The newly fitted, hand made integrated kitchen is contemporary and sleek with pale grey units and white granite worktops with a range of cupboards housing Emma Bridgewater & Burleigh Pottery crockery, glassware, cooking pans, baking equipment and serving dishes. Small but perfectly formed this kitchen is a holiday cooks dream with everything you could ever wish for! A fan oven, extractor fan and induction hob, combination microwave oven, dishwasher, washing machine, full height fridge freezer and plentiful cupboard space. There is also a Nespresso coffee machine.

The master bedroom, offers views over Mariner's Hill towards the coast at Cley Next Sea. It holds a luxurious king size rattan style french bed, large floor standing mirror, a Netflix enabled TV and built in wardrobes with plenty of hanging space.

Bedroom 2 hosts views towards Blakeney Marshes, a king size handmade ornate metal bed frame, chest of drawers and built-in wardrobes with hanging space. In a cupboard tucked away there is an ironing board & iron, clothes airer and a Dyson Hoover.

The shower room is bespoke made and features a fully fitted, shower, WC and fitted hand wash basin. The shower has a main overhead shower & secondary handheld shower and there are also fitted cupboards and shelf for toiletries & storage and a radiator & towel rail.

\*Free Wifi included

\*Please note, Waters Edge is not suitable for children.

# THE BLAKENEY COTTAGE COMPANY

## Accommodation

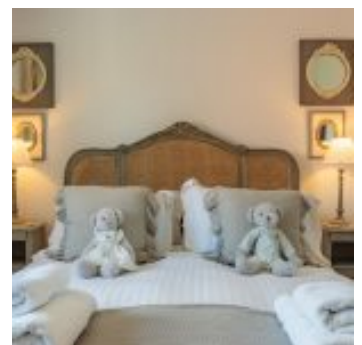
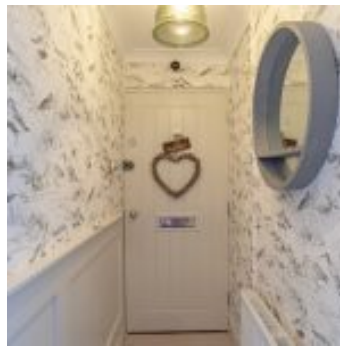
- Total Bedrooms x2
- Sleeps x3
- Kingsize beds x2
- Reception rooms x1
- Total Bathrooms x1

## Equipment

- Washing machine
- Iron & board
- Airing
- Large fridge freezer
- Microwave
- Dishwasher
- Free Wi-Fi
- Freeview/Freesat
- BluRay player
- Bluetooth speaker(s)

## Property

- Views
- Heating - Electricity
- No Parking
- No Children allowed



# THE BLAKENEY COTTAGE COMPANY

