

Beehive Cottage

Beehive Cottage is a charming property superbly located in the popular North Norfolk coastal village of Morston. It is within easy walking distance of the wonderful Anchor Pub and the 'Norfolk Etc'; water sports centre at Morston Quay. The majority of the trips to see the Seal colony out on Blakeney point run also from Morston Quay so it really is ideal if you plan to spend a lot of your time out on the water!

Recently renovated this pretty brick and flint detached cottage has well kept, private, fully enclosed gardens surrounding it on all sides with private parking for two cars, space for one more in the garage and also room for a small boat.

On the ground floor is a large open plan kitchen/dining room and a good sized sitting room with a lovely old style Morso log burner and plenty of comfortable soft furnishings. There is a large LED Smart T.V with Sky Q and a Samsung bluetooth sound system, as well as plenty of boardgames and books so guests can look forward to cosy winter nights in-front of the roaring fire. Large French doors open up from the sitting room out on to a south facing paved terrace and there are good sized windows on all sides of the property meaning it is a light and bright in summer as it is warm and cosy in winter.

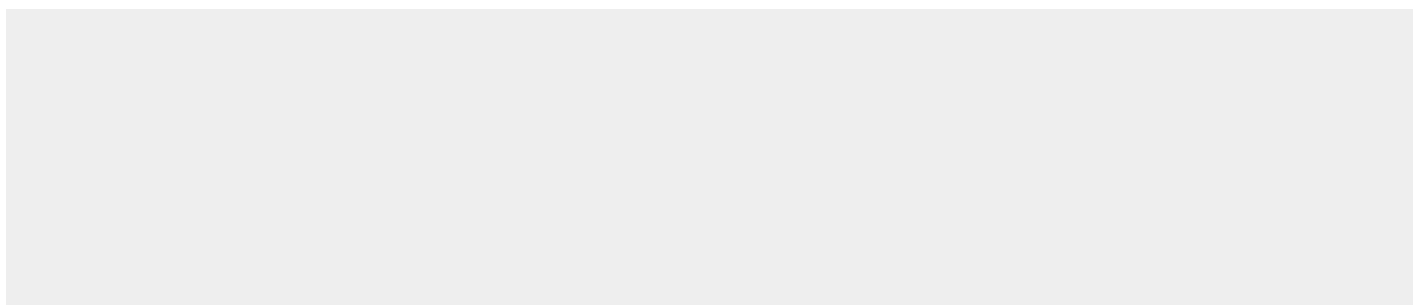
The kitchen is superb, handcrafted by the renowned Wychwood Cabinet Makers and is very well equipped with Miele appliances integrated underneath gorgeous, high quality composite worktops. For coffee lovers there is a Dolce Gusto pod machine and an integrated microwave in one of the wall cabinets which provide plenty of storage. The oak dining table comfortably seats four.

Upstairs is a large king-sized bedroom, a family shower room with gorgeous 'rain'; shower and a good sized twin room with plenty of built in storage. There is a wooden cot in the king bedroom perfect for young families.

In the separate garage there is a handy utility area with a washing machine, tumble dryer and freezer as well as an 'outdoor'; W.C.

Beehive Cottage is a super base for family holidays in the summer with the lovely gardens perfect for alfresco dining, sun bathing or as a lawned, enclosed play area for children. In winter it transforms into a charming and cosy cottage for couples to enjoy romantic nights in front of the wood burner. With its carefully chosen furnishings, soft hues and accessories, this gorgeous coastal retreat offers laid-back luxury living. Just a five minute walk to beautiful Morston Quay and the surrounding designated 'Area of Outstanding Natural Beauty';, the Michelin starred Morston Hall and multi award winning pub The Anchor, Beehive Cottage is a truly superb base for your holiday in North Norfolk.

Please note that only a starter pack of logs will be provided at the beginning of each stay during the winter months.



THE BLAKENEY COTTAGE COMPANY

Accommodation

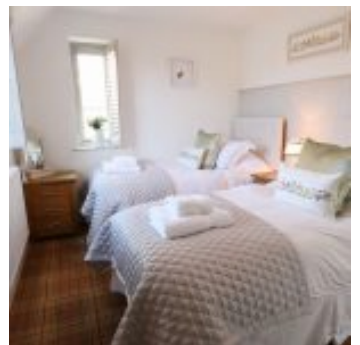
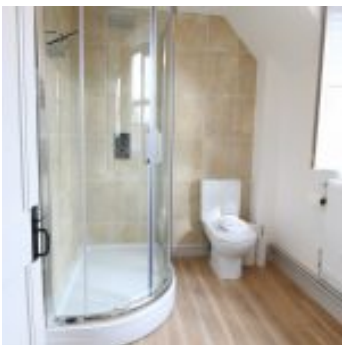
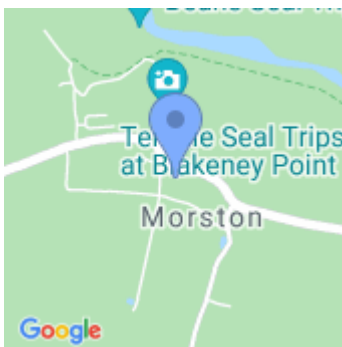
- Total Bedrooms x2
- Sleeps x4
- Twin beds x1
- Kingsize beds x1
- Reception rooms x2
- Total Bathrooms x1

Equipment

- Washing machine
- Tumble dryer
- Iron & board
- Fridge
- Freezer
- Microwave
- Dishwasher
- Free Wi-Fi
- Sky
- Freeview/Freesat
- Bluetooth speaker(s)

Property

- Garden furniture
- BBQ
- Fire - Woodburner
- Heating - Oil
- Parking x2 - Private
- Garden
- Children allowed
- Dogs allowed x2 (£25)



THE BLAKENEY COTTAGE COMPANY

