

Bradwell Lodge

Property locations in North Norfolk really don't come much better than this! Situated centrally in Cley-next-the-Sea, just a stone's throw from the famous windmill and all of Cleys amenities, Bradwell Lodge is a beautifully appointed two bedroom cottage with private parking and direct access to the coastal path via the windmill. This superb addition to our portfolio of handpicked properties has a wonderful stylish interior and is extremely well equipped throughout offering luxury and comfort making it an ideal holiday home discerning visitors.

On the ground floor, is a very well designed, bespoke made kitchen with beautiful Maple worktops. Its central island unit houses a large Butlers sink and a discreetly integrated dishwasher and the units offer plenty of storage and include separate integrated fridge and freezer, Bosch oven and induction hob, a microwave and Nespresso machine. With the large selection of cookbooks, there is everything one could possibly need for creating culinary masterpieces using ingredients from the excellent, award-winning delicatessen and smokehouse in the village. Off the hall, a small internal boot room leads to a downstairs cloakroom with a washing machine.

The large, stylish sitting room has lovely comfortable furnishings that nestle around a feature fireplace which houses a high-quality electric log burner. There is a large Sony LED SMART TV with FreeSat which can either sit discreetly tucked back against the wall or swing on an arm for quiet evenings in with wine and good movies. This room is home to a good selection of books and board games and is lovely, light and bright with its large, dual aspect Georgian sash windows.

Upstairs are two large bedrooms and a high-quality shower room with a wonderful corner specialist power-shower! Both beautifully furnished bedrooms have six-foot zip and link beds and feature the gorgeous original fireplaces. The zip and link beds mean that either room can be made up as a twin or Superking room (please give at least two weeks notice of your requirements). This adds a rare flexibility to the accommodation meaning parties can consist of two couples, a couple and two children or four people who require individual beds! Both bedrooms have partial far reaching views across the saltmarsh and out to sea.

The front gravel courtyard garden at Bradwell Lodge is surrounded by woven hazel fencing making it an ideal private spot for sipping a drink and watching the world go by. There is also parking for one car to the rear and from there a path leads straight to Cley windmill and the Coastal Path.

Accommodation

- Sleeps x4
- Zip and link beds x2
- Reception rooms x2
- Total Bathrooms x1

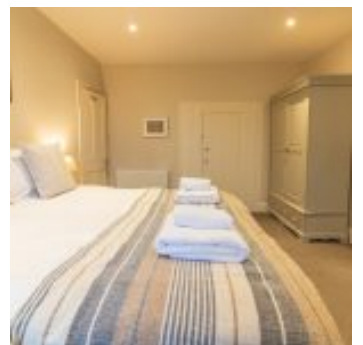
Equipment

- Washing machine
- Fridge
- Freezer
- Microwave
- Dishwasher
- Free Wi-Fi
- Freeview/Freesat
- DVD player
- Telephone

Property

- Views
- Garden furniture
- BBQ
- Fire - Electric
- Heating - Electricity
- Parking x1 - Private
- Garden
- Children allowed
- Dogs allowed x2 (£25)

THE BLAKENEY COTTAGE COMPANY



THE BLAKENEY COTTAGE COMPANY

