

Gardeners Cottage

We are simply delighted to include Gardeners Cottage in our portfolio in the heart of Blakeney village, sleeping up to 14 guests! Gardeners Cottage has been extended and completely renovated to offer attractive, spacious accommodation plus a pretty south facing garden and parking for up to 5 cars.

The ground floor accommodation is accessed from the entrance hallway with its practical tiled floor and stairs leading to the first floor. To the left of the front door is the cosy sitting room with three sofas clustered around the fireplace and wood burning stove. The room is bright and comfortably furnished with a TV and a full bookcase for cosy evenings at home. Glazed doors lead through to the spectacular open plan main living space which contains the very large kitchen, dining area and separate sitting area.

This fabulous room is the central, sociable hub of the house and is extremely spacious, light and bright with two sets of French doors leading out onto the gravel terrace area of the pretty south facing garden. The kitchen area is beautifully fitted with excellent quality cream painted units with granite work surfaces. A huge island unit contains a double Belfast sink and dishwasher, and drawers and cupboards containing a good selection of cookware and crockery. There is also a four oven electric cream AGA range for all cooking needs and a free standing Smeg fridge freezer and separate wine fridge. Dividing the kitchen and the sitting areas is a large pine topped dining table seating fourteen and the comfortable sitting area has two sofas facing each other over a large coffee table next to a large painted cupboard containing a huge TV. There is a desk in one corner for those wishing to catch up on the outside world with free wifi. There is oodles of cupboard space with a hanging cupboard for coats and boots and an airing cupboard.

The family room links to the rear hallway and the two ground floor bedrooms both with King sized beds. The front bedroom is most imposing with its romantic four poster bed and mahogany furniture. There is also a large TV in this room. It has a big en suite bathroom with both a lovely claw foot bath and walk in shower, wash basin and wc and is very light with dual aspect windows with voile roman blinds. The rear King size bed room has use of the next door ground floor bathroom again with a claw foot bath with telephone handle style shower head within it, wash basin and wc.. This room has double glazed doors leading out to a little courtyard. A door from this bedroom leads to the large utility room with fitted units containing a butlers sink and has a washing machine and tumble drier. There is plenty of hanging space in this room which again has a door onto the inner courtyard.

On the first floor are three good sized bedrooms all set under the sloping eaves which give great character and with conservation sky lights plus the windows mean all the bedrooms are very light and bright. As with the ground floor bedrooms, all the flooring is pale oak with limestone effect tiles used in the bathrooms. There is a very large king size bedroom with a pretty French upholstered bed, now with an additional single bed, with a large en-suite containing a claw foot bath plus a walk in shower, wash basin and wc. Also on this floor is a 'family bedroom' which contains a kingsize bed as well as two single beds and a room with a double bed and a single bed. These two bedrooms share a separate family bathroom which has a bath with glass screen and shower above, wash basin and wc.

Throughout Gardeners Cottage are delightful touches put in by the charming family who use it as their coastal hideaway. The rooms have been styled with an eclectic mix of antique and 'shabby chic' and modern furnishings, ornaments and paintings, and the whole feel of the house is laid back comfort. We are sure it will become a firm favourite with families and friends who love the idea of meeting up in the super family room which is the heart of Gardeners Cottage.

*Up to three well behaved dogs welcome at Gardeners Cottage

THE BLAKENEY COTTAGE COMPANY

*Please note, there is a £250 refundable security deposit required with each booking at Gardeners Cottage. If you have any queries, please contact our office on 01263 741777.

Accommodation

- Total Bedrooms x5
- Sleeps x14
- Single beds x4
- Double beds x1
- Kingsize beds x4
- Reception rooms x2
- Ground floor bathrooms x2
- Total Bathrooms x4
- Ensuites x2
- Ground floor bedrooms x2

Equipment

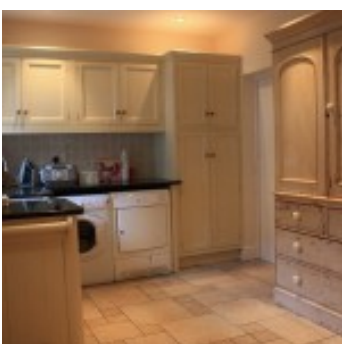
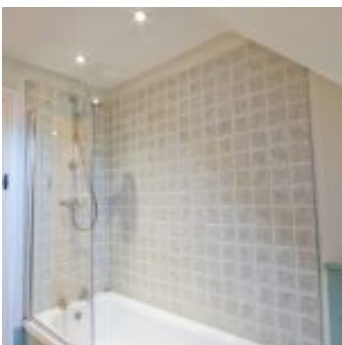
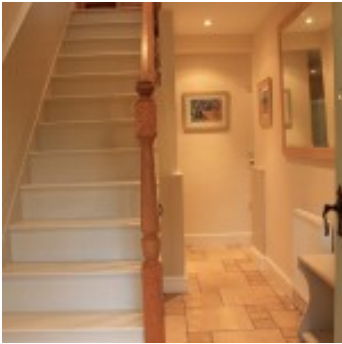
- Washing machine
- Tumble dryer
- Large fridge freezer
- Microwave
- Dishwasher
- Free Wi-Fi
- Freeview/Freesat
- DVD player

Property

- Garden furniture
- BBQ
- Fire - Woodburner
- Heating - Oil
- Parking x5 - Private
- Garden
- Children allowed
- Dogs allowed x3 (£25)



THE BLAKENEY COTTAGE COMPANY



THE BLAKENEY COTTAGE COMPANY

