

Rosewood

Set over three floors, Rosewood offers practical and spacious accommodation for up to 10 guests and two well behaved dogs. Rosewood, situated in the coastal town of Sheringham, is a five bedroom Edwardian property which has been elegantly refurbished to high-end, luxury standards. The owners of this property have completed a sympathetic renovation to ensure traditional features are kept, such as wide frontage, over-sized ornate windows, high ceilings and rooms of large proportions, whilst embracing the comforts of modern day life.

The formal sitting room features a marble fireplace, wood burner, comfortable seating and modern interiors which all add to this refined and formal entertaining space.

The open plan kitchen/dining room boasts stylish and luxurious fittings and appliances and has an island with bar stools, ideal for socialising and entertaining whilst cooking. The dining table and chairs comfortably seat 10 guests. Bi-fold doors from the dining area out onto the rear terrace and garden, and a glazed roof lantern offer plenty of natural light to flood in to this space, creating a relaxing and bright feel as well as being perfect to open up on a hot summers day to let the outside in! Aside from the kitchen is a cosy snug room, with comfortable seating, television and wood burner.

The first floor features the first of three spacious bedrooms, all individually designed with period detailing. This floor features two king size bedrooms and one zip and link bedroom (Please give us at least 2 weeks notice on your preferred bed configuration). A luxurious family sized bathroom with separate shower serves the bedrooms.

Rising to the second floor you'll find the master bedroom, boasting elevated coastal views and a delightful en-suite shower room. A further zip and link bedroom and bathroom completes the accommodation.

Rosewood has a south facing garden that features an extensive paved sun terrace, central lawn and high fenced boundaries. The garden has been cleverly designed to provide a space that is perfect for entertaining. The outside space also features well-designed storage space and an outside shower, perfect for a wash down after a day at the beach. A personal gate on the rear boundary leads to a private shingled parking area, with space for two cars.

Rosewood is situated in Sheringham, which offers the perfect balance of coastal and town life, with both the beach and amenities of Sheringham just a short stroll away. Sheringham's award winning Blue Flag sandy beach is flanked by the Esplanade and West Cliff Gardens with its wonderful elevated coastal walks and boating lake. The vibrant town centre of Sheringham is equally as close and is blessed with a wide variety of independent restaurants, pubs, shops and even a theatre.

Accommodation

- Sleeps x10
- Kingsize beds x2
- Superking beds x1
- Zip and link beds x2
- Reception rooms x2
- Total Bathrooms x2
- Ensuites x1

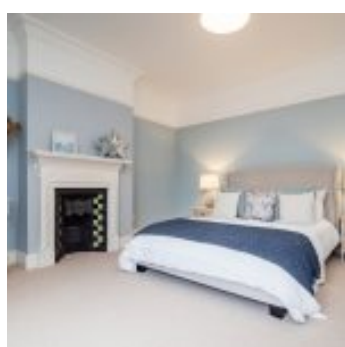
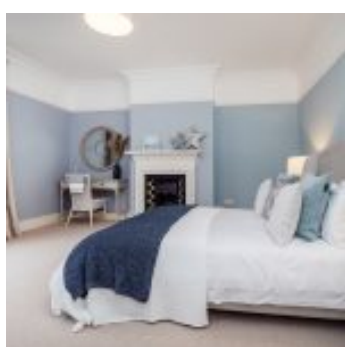
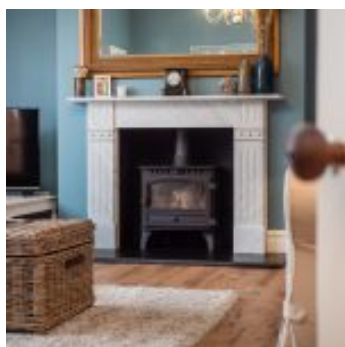
Equipment

- Washing machine
- Tumble dryer
- Iron & board
- Airer
- Fridge
- Freezer
- Microwave
- Dishwasher
- Free Wi-Fi

Property

- Views
- Garden furniture
- BBQ
- Fire - Woodburner
- Parking x2 - Private
- Garden
- Children allowed
- Dogs allowed x2 (£25)

THE BLAKENEY COTTAGE COMPANY



THE BLAKENEY COTTAGE COMPANY

