

## Scriveners

We are delighted to offer our guests Scriveners in Blakeney. Situated in a secluded spot in Blakeney, with magnificent gardens, private parking, games room, an annexe and being dog friendly, we know that Scriveners is going to be extremely popular for groups of friends and family. Scriveners benefits from being all on one level, bar one bedroom, so perfect for groups who may have less mobile guests in their party.

Scriveners has an open plan kitchen, dining and living space, perfect for socialising together as a large group. There is a Smart TV with Sky in this living space. The modern kitchen has a large fridge with water dispenser, undercounter freezer, dishwasher, washer drier and microwave. Scriveners has an induction hob and range cooker, a Nespresso machine and a separate drinks fridge. Please note, some coffee pods are provided but please bring your own too. There is also a Bose Sound Link and Digital Radio in the kitchen.

The sitting room at Scriveners has stylish interiors, including a modern log-burning stove, making it wonderfully cosy in the winter months and especially welcoming after a long day out walking. There is a Smart TV with Sky provided, as well as free Wifi.

Scriveners benefits from four large bedrooms in the main house, including a super kingsize bedroom, two kings and a twin. There is one shared family bathroom and three en-suites in the main house.

The first en-suite has a bath and separate walk in shower. The second and third en-suite have walk in showers. The main family bathroom has a bath with overhead shower.

Little Scriveners, the annexe to Scriveners is the perfect space for families with Au Pairs, or a wonderful space for teenagers or relatives to fully relax and have some space during their holiday. It comprises of a sitting room, kitchen and dining space, a king-size bedroom, a twin bedroom and a bathroom with bath and overhead shower.

Attached to Little Scriveners is a fantastic Games Room, complete with a table tennis table. The bi-fold doors allow you to bring the outside in and open up to external dining space which creates a wonderful flow for socialising. Badminton net and rackets, crabbing buckets and nets and other garden games and sundry balls are also provided.

Scriveners has a glorious mature garden, with well-maintained lawn, shrubbery and flower beds. The path through the flower beds to the lawn is uplit which creates beautiful visuals once the sun sets. There is a covered dining area with BBQ which allows guests to enjoy alfresco dining, whatever the weather!

High chair and cot are provided at the property.

### Accommodation

- Total Bedrooms x6
- Sleeps x12
- Twin beds x2
- Kingsize beds x3
- Superking beds x1
- Reception rooms x3
- Ground floor bathrooms x5
- Total Bathrooms x5
- Ensuites x4

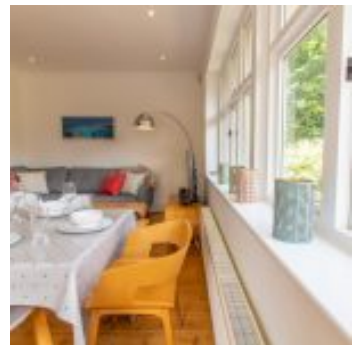
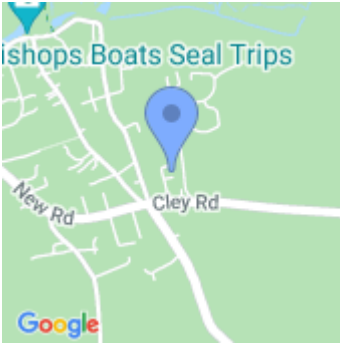
### Equipment

- Washer dryer
- Iron & board
- Aired
- Large fridge freezer
- Microwave
- Dishwasher
- Free Wi-Fi
- Sky

### Property

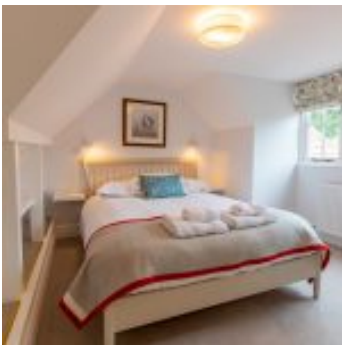
- Garden furniture
- BBQ
- Fire - Woodburner
- Heating - Oil
- Parking x3 - Private
- Garden
- Children allowed
- Dogs allowed x2 (£25)

# THE BLAKENEY COTTAGE COMPANY





# THE BLAKENEY COTTAGE COMPANY



# THE BLAKENEY COTTAGE COMPANY

