

Seascape

Seascape is a gorgeous, recently renovated property sitting in a wonderful location right in the centre of Blakeney Village on the beautiful North Norfolk coast.

This boutique-style accommodation offers four bedrooms, two ensuite bathrooms and a family bathroom with both a bath and a walk-in shower. Seascape is ideal for family getaways or groups of friends who want a quiet retreat to the coast.

Internally, Seascape has been beautifully interior designed in a neutral palette to create open, airy and light living spaces. The property is very well equipped with everything you would expect from a high standard family home.

The first floor comprises of an open plan kitchen/living space in a large 'L' shape, which creates the perfect space for socialising and relaxation. Across from the comfy sofa area and wood-burner, sits a large Netflix enabled television. This is a perfect space for quiet nights watching movies, listening to music on the bluetooth sound-bar or sinking into one of the many books the owners have kindly left for their guests. With the living area being on the first floor, there are outstanding open views over the salt marshes and out to sea from the dining area. A large dining table, seating 8 people and large kitchen island add to the ambience of relaxation and socialisation in this delightful property

The kitchen is extremely well-equipped, with a ceramic hob, two integrated ovens, one being a combination microwave oven. There are also two integrated fridges, an undercount integrated freezer and integrated AEG dishwasher, all tucked under the kitchen island, complete with four bar stools, perfect for sitting and socialising whilst cooking in the beautiful kitchen.

Downstairs there are four bedrooms, two of which have ensuite facilities. Avocet, the master bedroom, has a king size bed, plenty of hanging space, television and an en-suite shower room. The second bedroom, Curlew, has a double bed, television and views out into the garden. Along the hallway is a family bathroom with an integrated bath and separate walk in shower.

Swallow, the third bedroom, is a zip and link bedroom, which can either be made into a king-size bed or two twin beds (please give at least 2 weeks notice for your preferred bed configuration) and has views into the garden and plenty of storage space for your clothes.

The fourth bedroom, Plover, has a double bed with an en-suite shower room, plenty of storage and views into the outside flower beds.

Downstairs there is a useful utility room, housing a washer/dryer, sink, ironing board and vacuum cleaner which leads out into the walled garden and patio area. The garden is a mixture of lawned area and patio, with plenty of outside seating and umbrella and a charcoal BBQ. There is a shed for wetsuits, buckets and spades and anything else you need to store in a secure, outside space! The owner also supplies buckets and spades and boules for guests use.

With 2 private parking spaces and an enclosed, private garden and light, airy living space, this property is a perfect base for exploring the North Norfolk coast whether it be for a cosy autumnal visit, a quick weekend getaway or a delightful summer holiday.

THE BLAKENEY COTTAGE COMPANY

Accommodation

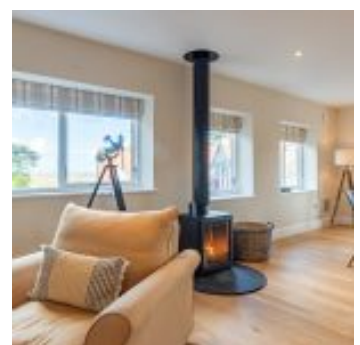
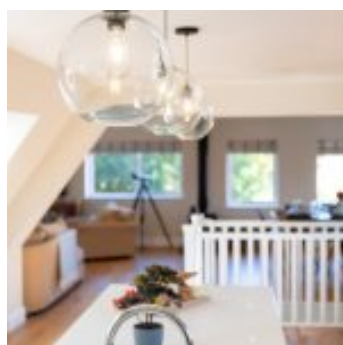
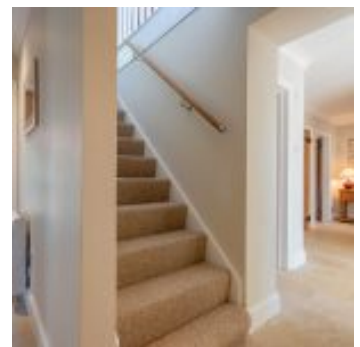
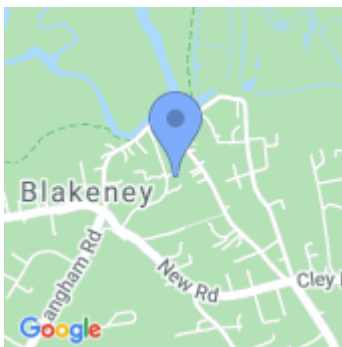
- Total Bedrooms x4
- Sleeps x8
- Double beds x2
- Kingsize beds x1
- Zip and link beds x1
- Reception rooms x1
- Ground floor bathrooms x3
- Total Bathrooms x3
- Ensuites x2
- Ground floor bedrooms x4

Equipment

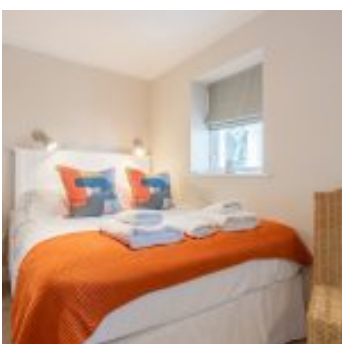
- Washer dryer
- Iron & board
- Fridge
- Freezer
- Microwave
- Dishwasher
- Free Wi-Fi
- Freeview/Freesat
- Bluetooth speaker(s)
- Telephone

Property

- Views
- Garden furniture
- BBQ
- Fire - Woodburner
- Heating - Electricity
- Parking x2 - Private
- Garden
- Children allowed
- Dogs allowed x1 (£25)



THE BLAKENEY COTTAGE COMPANY



THE BLAKENEY COTTAGE COMPANY

