

## The Old Victoria

The Old Victoria, is a converted brick and flint pub tucked away in Stiffkey, with four bedrooms, a private garden and private parking for our guests. The Old Victoria is located at the end of the village, surrounded by tranquil farm land and well away from the busy coastal road with views across open fields. The property is full of character, incorporating traditional features with modern open plan living space and will entice our guests into a lovely break away to the North Norfolk Coast.

The open plan kitchen, with dining space, has everything you may need during a self-catering holiday. There is a conventional oven and hob with integrated microwave as well as an electric AGA with hot plate, simmering plate, roasting oven and a simmering oven. There is also a 50/50 American fridge freezer, washing machine and a Nespresso machine (please bring your own coffee capsules should you require the use of the coffee machine). There is also a digital radio in the kitchen for guests use and a sofa tucked in the recess in the kitchen to create a snug, relaxing area.

The sitting Room, linked to the kitchen and dining area has an open fire and sofas.

The snug room has a wood-burner for cosy winter evenings reading a book by the fire with a glass of wine! This room also has a TV, DVD player and a piano.

Bedroom 1 is a kingsize room with plenty of clothing storage.

Bedroom 2 is a double room with a balcony leading to the garden area.

Bedroom 3 has two iron single beds with beautiful wallpaper on two feature walls.

Bedroom 4 is a bunk room, with a unique feature wall, perfect for children!

There are two large bathrooms, one being a walk in shower in one and the other, a bath with shower. The upstairs bathroom has Jack & Jill access from the hallway on one side and a bedroom on the other side.

There is an annexe with The Old Victoria, which can be booked with the property at an additional cost to allow groups of 10 to stay. This recently converted barn/outbuilding retains its period features while benefiting from all modern amenities: central heating, a skylight, king size bed, en-suite wet room & power shower. The porch leading to the garden provides comfortable seating, shade and storage.

Garden &#8211; The garden at The Old Victoria includes a sun deck, balcony off the double bedroom, fire pit, lawned garden, a courtyard, a sauna and a an area equipped with workout equipment located in the out building! Part of this back garden is enclosed for dogs. The charcoal BBQ and the outside seating area makes for a perfect space to enjoy the summer evenings with friends and family.

Guests are also welcome to BBQ and have camp fires / toast marsh mallows in the fire pit area of the garden or enjoy the sun trap decking with views into open countryside.

The owners of this property provide a travel cot and high chair.

Please note, this property does not accept parties, hen parties or stag parties.

\*Please note that there is a £250 refundable security deposit to be taken with every booking at The Old Victoria.

# THE BLAKENEY COTTAGE COMPANY

## Accommodation

- Sleeps x8
- Bunk beds x1
- Twin beds x1
- Double beds x1
- Kingsize beds x1
- Reception rooms x2
- Total Bathrooms x2

## Equipment

- Washing machine
- Iron & board
- Large fridge freezer
- Microwave
- Freeview/Freesat
- Bluetooth speaker(s)

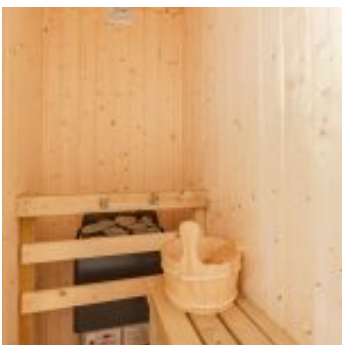
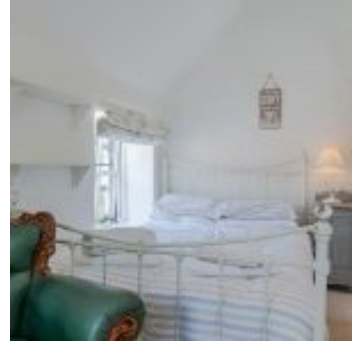
## Property

- Garden furniture
- Fire - Open Fire
- Heating - Oil
- Parking x2 - Private
- Courtyard
- Garden
- Children allowed
- Dogs allowed x2 (£25)





# THE BLAKENEY COTTAGE COMPANY



# THE BLAKENEY COTTAGE COMPANY

